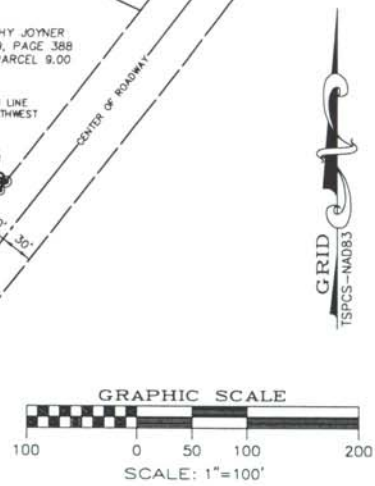
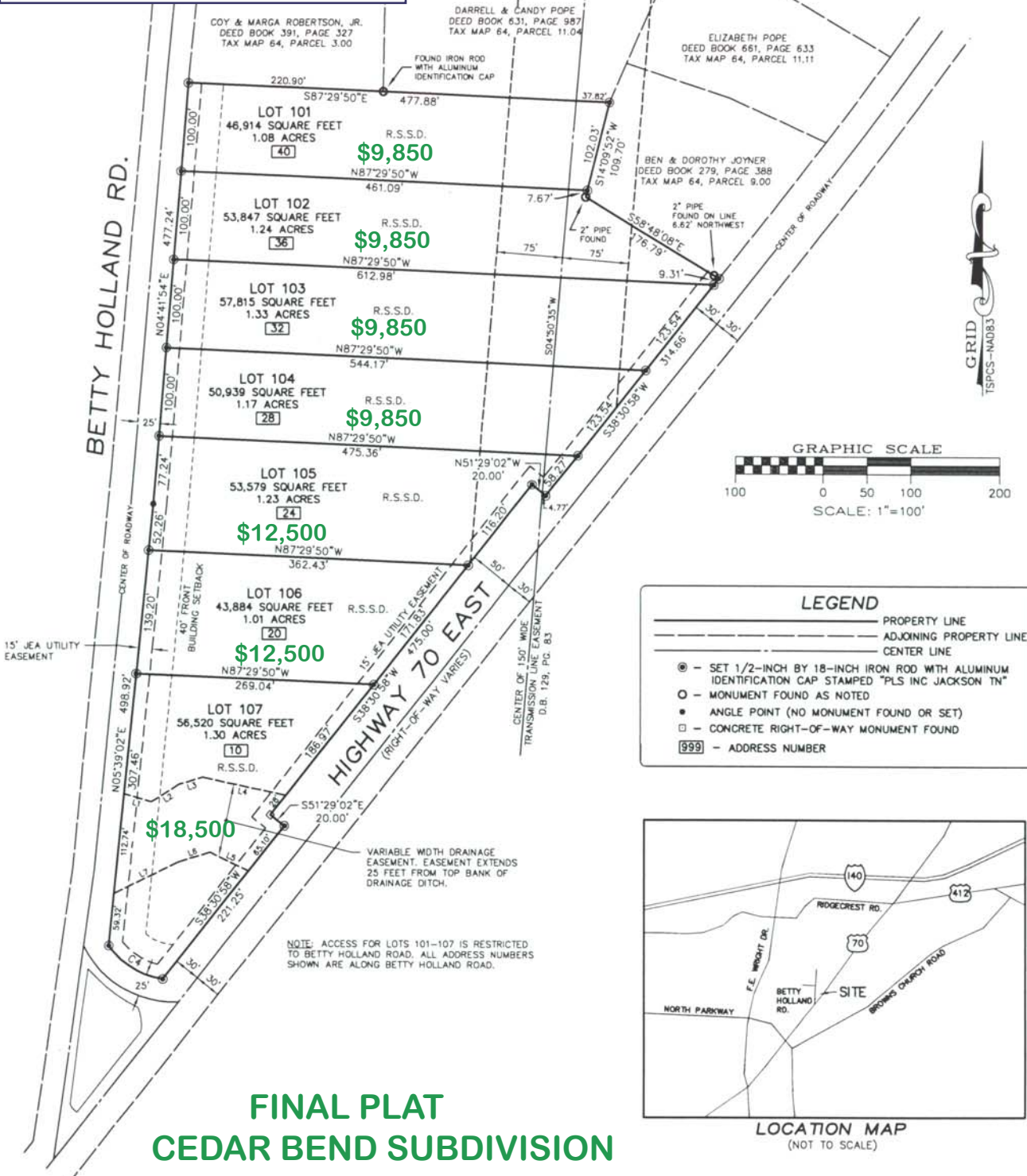


Lee Godfrey, Broker, CRS  
 Coldwell Banker Real Estate Now  
 731-343-2900 (Cell)  
 731-664-2308 (Office)  
 lee@leegodfrey.com (Email)  
 www.LeeGodfrey.com (Website)

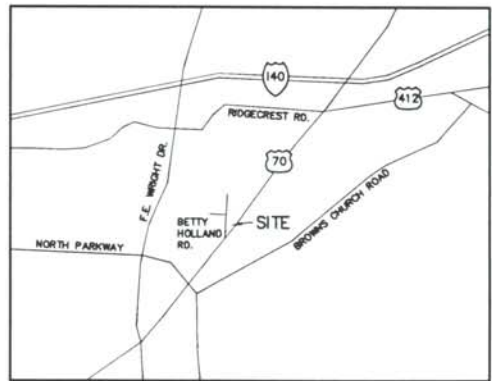
CURVE TABLE				
CURVE	LENGTH	RADIUS	CHORD BEARING	CHORD LENGTH
C4	73.25	90.00	N58°06'28"W	71.25

LINE TABLE		
LINE	BEARING	DISTANCE
L1	S73°41'35"E	31.93
L2	N57°49'09"E	36.26
L3	N73°21'59"E	28.45
L4	S78°07'35"E	96.61
L5	N64°19'54"W	48.32
L6	S73°11'42"W	37.75
L7	S63°48'33"W	80.46



**LEGEND**

- PROPERTY LINE
- - - ADJOINING PROPERTY LINE
- CENTER LINE
- - SET 1/2-INCH BY 18-INCH IRON ROD WITH ALUMINUM IDENTIFICATION CAP STAMPED "PLS INC JACKSON TN"
- - MONUMENT FOUND AS NOTED
- - ANGLE POINT (NO MONUMENT FOUND OR SET)
- - CONCRETE RIGHT-OF-WAY MONUMENT FOUND
- [999] - ADDRESS NUMBER



**FINAL PLAT  
 CEDAR BEND SUBDIVISION**

Job #: 08136  
 DWG File #: 08136  
 Scale: 1"=100'  
 SHEET 1 OF 1

PLAT OF  
 CEDAR BEND  
 BETTY HOLLAND ROAD & U.S. HIGHWAY 70  
 FIFTH CIVIL DISTRICT  
 MADISON COUNTY, TENNESSEE

FOR  
 WADE NORRIS  
 46 WHITE PLAINS DR.  
 JACKSON, TN 38305

**Professional Land Services**  
 LAND SURVEYING - MAPPING - PLANNING  
 118 Miller Avenue  
 Jackson, Tennessee 38305  
 Phone: (731) 666-7171 Fax: (731) 666-0775

FW Date: 11/04/08  
 Drawn By: ABD  
 Date Drawn: 01/30/09  
 Checked By: ABD