

IRON PIN SET AT ALL PROPERTY CORNERS WITH 1/2 INCH REBAR STAMPED "R.L.S. #1898" ORANGE PLASTIC CAP UNLESS OTHERWISE NOTED.

MARK	BEARING	DISTANCE
L1	N81°46'34"W	134.77
L2	N33°17'04"E	170.26
L3	N42°50'42"E	84.17
L4	N37°10'02"E	178.36
L5	N02°27'39"E	204.81
L6	N50°08'56"E	124.13
L7	N50°08'53"E	90.87
L8	N85°11'07"W	136.27
L9	N83°46'50"W	186.39
L10	N85°46'56"W	183.81
L11	N32°24'54"W	72.06

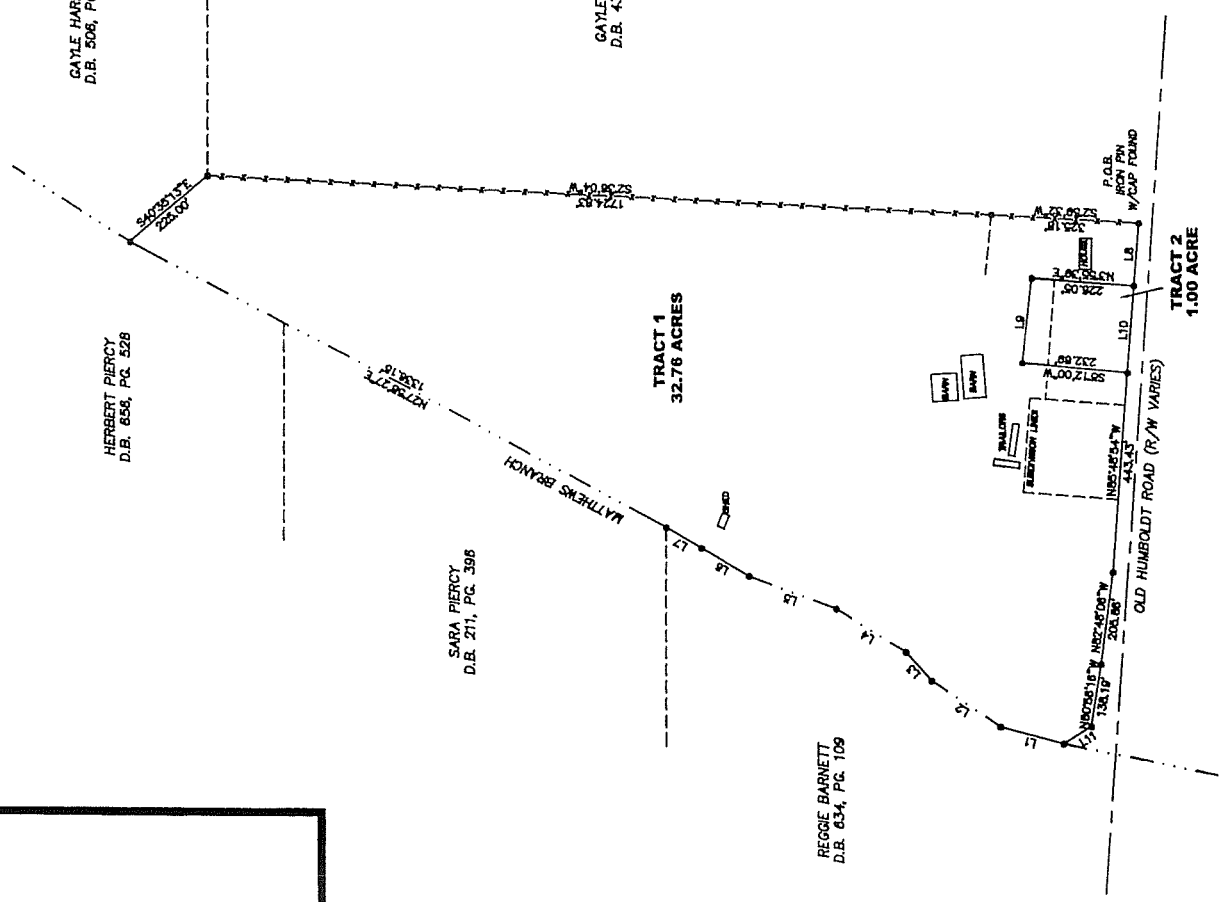
GAYLE HARRISON  
D.B. 439, PG. 140

GAYLE HARRISON  
D.B. 506, PG. 219

HERBERT PIERCY  
D.B. 658, PG. 528

SARA PIERCY  
D.B. 211, PG. 396

REGGIE BARNETT  
D.B. 654, PG. 109



**Advanced Land Surveying, Inc.**  
883 U.S. Highway 45 North Henderson, Tennessee 38340  
731-983-0509

I hereby certify that this is a category 1 survey and the ratio of precision of the unadjusted survey is 1:10000 as shown hereon.

**MALCOLM DELOACH PROPERTY**  
DEED BOOK 211, PAGE 396

DRAWN BY: G. PERRY  
DATE: APRIL 4, 2010  
FILENAME: DELOACH  
DRAWING # 043.10

MAP: 15  
PARCEL: 44.02  
DISTRICT: 78RD  
COUNTY: MADISON, TN