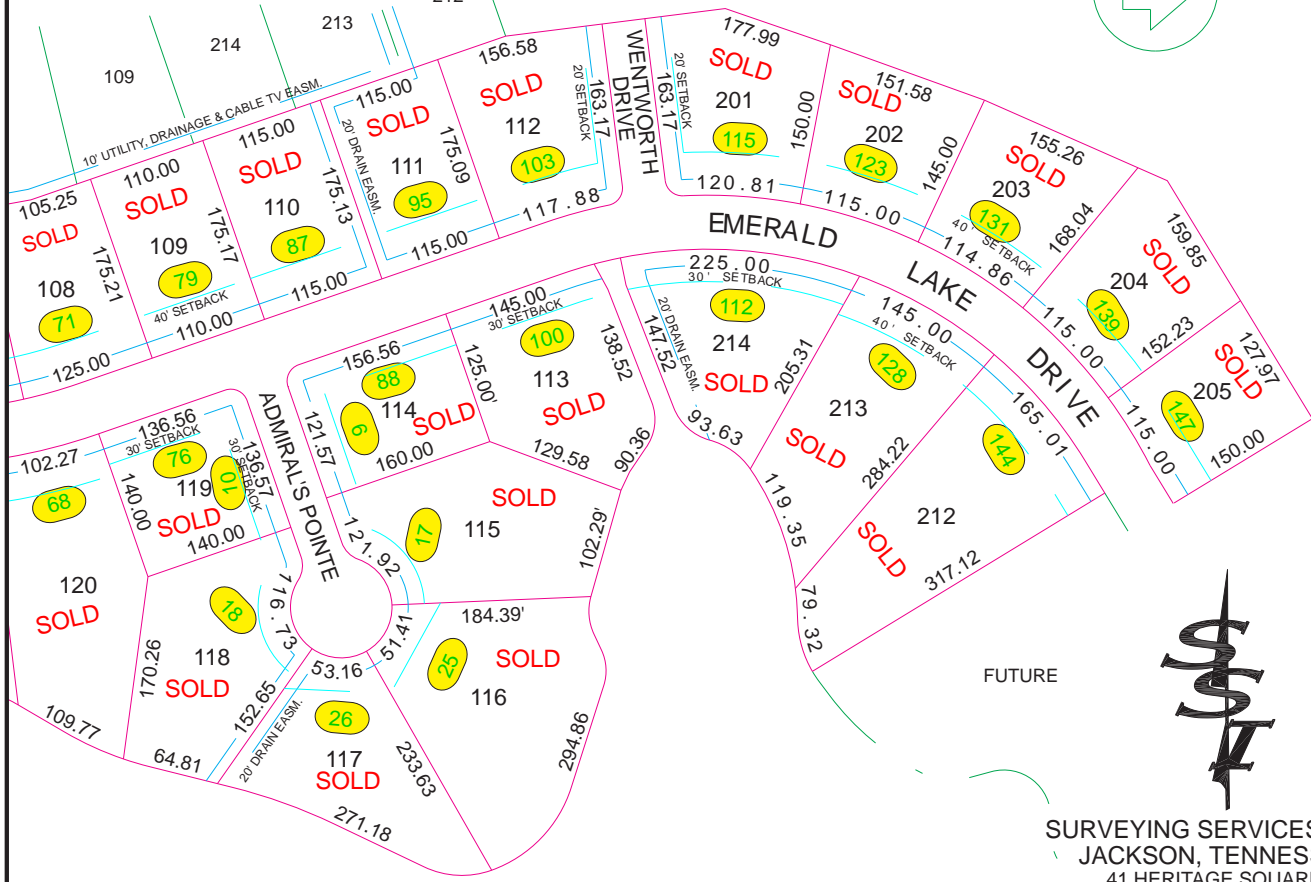


EMERALD LAKE SUBDIVISION SECTION I & II

SHEET 2 OF 2

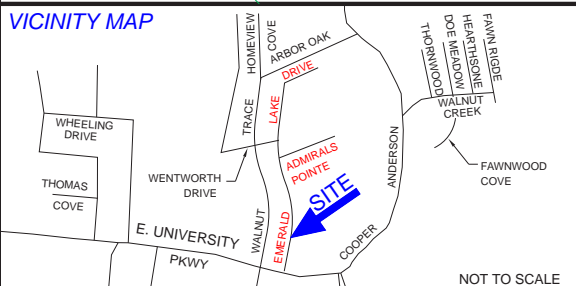
WALNUT TRACE SUBDIVISION - SECTION II
PLAT BOOK 7, PAGE 106



SURVEYING SERVICES, INC.
JACKSON, TENNESSEE
41 HERITAGE SQUARE
(731) 664-0807

**EMERALD LAKE
COMMONS AREA**
(INCLUDES RETAINING WALL)
14.57 ACRES

71 - House #
108 - Lot #



LOT SALE INFORMATION
LEE GODFREY
OFF: 731-664-2308
FAX: 731-664-2388
EMAIL: lee@leegodfrey.com