



**LEE GODFREY, BROKER, CRS**

OFFICE: 731-664-2308  
CELL: 731-343-2900  
WEB SITE: [www.LeeGodfrey.com](http://www.LeeGodfrey.com)  
EMAIL: [lee@leegodfrey.com](mailto:lee@leegodfrey.com)



Real Estate Now

*Property Profile*



**21 GREENWICH COVE - \$212,500  
Walnut Trace North Subdivision**

4 Bedrooms - 2 1/2 Baths  
By: Jeff Baker Construction  
2440 Sq. Ft. Living Area  
Double Enclosed Garage  
19 x 15 Covered Patio

*Top Quality Professional Service You Deserve!*

**ROOM ARRANGEMENT**

First Floor

Foyer, Great Room, Formal Dining Room, Eat-N-Kitchen, Separate Laundry Room, Master Suite + 1/2 Bath

Second Floor

3 Bedrooms, 2nd Full Bath

**GENERAL INFORMATION**

Floor coverings: Carpet/Tile/Hardwood  
Type Roof: Architectural  
Heat & Air: 2 Central Units  
Fuel: Gas Heat/Electric Air  
Water Heaters: 1 Gas Fired  
Water Supply: Public (JEA)  
Sewage Disposal: Public (JEA)  
**Age: New Construction (Built 2010)**

**ROOM SIZES**

Foyer	9 x 8
Great Room	18 x 16
Dining Rm	15 x 11
Kitchen	18 x 16
Master Bed Rm	18 x 13
Bedroom #2	12 x 11
Bedroom #3	17 x 16
Bedroom #4	12 x 11
Laundry Room	7 x 6

**APPLIANCES INCLUDED**

Stainless Smooth Top  
Electric Self-Cleaning  
Range  
Stainless Dishwasher  
Stainless Microwave  
Venthood  
Disposal

**ITEMS INCLUDED**

Mailbox



**LEE GODFREY, BROKER, CRS**

OFFICE: 731-664-2308  
CELL: 731-343-2900  
WEB SITE: [www.LeeGodfrey.com](http://www.LeeGodfrey.com)  
EMAIL: [lee@leegodfrey.com](mailto:lee@leegodfrey.com)



Real Estate Now

*Property Profile*

**SCHOOL ZONES**

Elementary: Thelma Barker  
Middle: North Parkway  
High School: North Side

**LOT SIZE**

90' x 145'

.30 Acres

Plat on File in Office

**SPECIAL FEATURES**

- \* Great Value in Walnut Trace North
- \* Hardwood in Foyer, Great Room & Dining Room
- \* Ceramic Tile in Kitchen, Keeping Room, Laundry & Both Baths
- \* 2 Story Entry
- \* Hardwood Staircase & Wrought Iron Handrails
- \* Great Room with 2 Story Ceiling & Gas Log Fireplace
- \* Eat-N-Kitchen with Island, Granite Countertops & Walk-In Pantry
- \* Master Suite Features Tray Ceiling, Salon Bath with Separate Shower, His/Her Vanities, Whirlpool Tub, Separate Potty Room & Large Walk-In Closet
- \* Security System
- \* 19' x 15' Covered Patio off Great Room
- \* Double Enclosed Garage
- \* Fully Sodded & Landscaped
- \* Fenced Yard

*Thank You  
For Your Interest  
-Lee Godfrey  
731-343-2900*



**LEE GODFREY, BROKER, CRS**

OFFICE: 731-664-2308

CELL: 731-343-2900

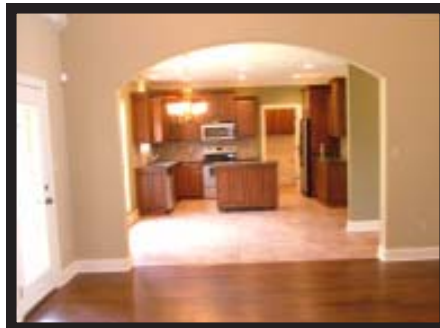
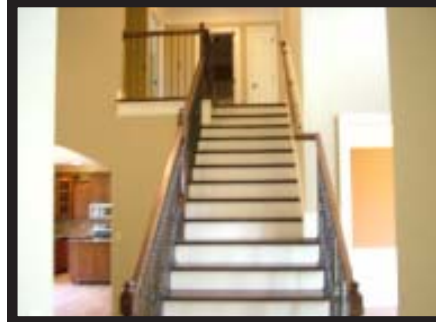
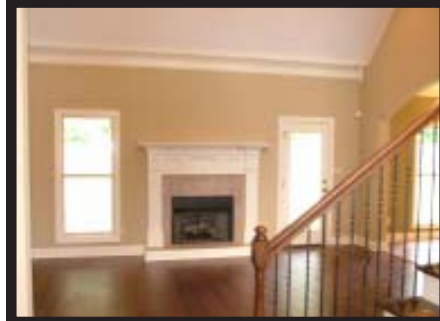
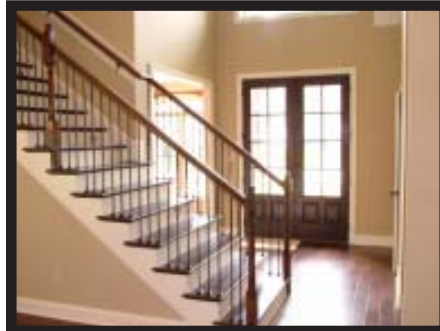
WEB SITE: [www.LeeGodfrey.com](http://www.LeeGodfrey.com)

EMAIL: [lee@leegodfrey.com](mailto:lee@leegodfrey.com)



Real Estate Now

## *Property Profile*



*Top Quality Professional Service You Deserve!*

*Page 3 of 3*