



LEE GODFREY, BROKER, CRS

OFFICE: 731-664-2308
CELL: 731-343-2900
WEB SITE: www.LeeGodfrey.com
EMAIL: lee@leegodfrey.com



Real Estate Now

Property Profile



585 LOST CREEK BOAT DOCK RD - \$265,000
Lost Creek Subdivision

"Fully Furnished Waterfront Cabin"

3 Bedrooms - 3 Full Baths
2020 Sq Ft. Living Area
2 Covered Decks
Detached Garage

Top Quality Professional Service You Deserve!

ROOM ARRANGEMENT

Main Level

Master Bedroom Suite w/Full Bath, 2nd Bedroom - 2nd Full Bath, Den

Lower Level

Eat-N-Kitchen/Great Room Combination, 1 Bedroom - 3rd Full Bath - Separate Laundry Room

GENERAL INFORMATION

Floor coverings: Carpet/Tile/Laminate/Carpet
Type Roof: Metal
Heat & Air: Gas Heat/Electric Air
Water Heaters: 1 Electric
Water Supply: Perryville Utilities
Sewage Disposal: Septic
Age: **13 Yrs (Built 1997)**
Annual Taxes: **\$961**

ROOM SIZES

Great Room 17 x 17
Den 17 x 16
Eat-N-Kitchen 18 x 11
Master Bed Rm 15 x 14
Bedroom #2 11 x 11
Bedroom #3 11 x 11

APPLIANCES INCLUDED

Maytag Range with 2 Self-Cleaning Ovens
Refrigerator
Microwave Venthood
Dishwasher
Disposal
Washer
Dryer

LOT SIZE

339+ Ft. River Frontage
Approximately
.6 Acres
Plat on File in Office

ITEMS INCLUDED

All Window Treatments
All Furniture



LEE GODFREY, BROKER, CRS

OFFICE: 731-664-2308
CELL: 731-343-2900
WEB SITE: www.LeeGodfrey.com
EMAIL: lee@leegodfrey.com



Real Estate Now

Property Profile

ITEMS EXCLUDED

TV
Pictures
Good Dishes
Some Pots & Pans

Directions to Property

From the Courthouse in Decaturville, TN Take Highway 100 E Towards Perryville for 4.2 Miles, Turn Left on Lost Creek Boat Dock Road for 3/10 Mile, Bear Left on Lost Creek Boat Dock Road for Another 3/10 Mile. House on Left

Top Quality Professional Service You Deserve!

FEATURES & AMENITIES

- * Fully Furnished
- * Beautiful View of Beech River and Lake at Lost Creek Boat Dock from Every Room in House Except Laundry Room & Baths
- * 339 Ft. of River Frontage on Beech River
- * Custom Built by Present Owner
- * Cedar Walls Inside & Out
- * Clad Windows
- * Solid Wood Interior Doors
- * 2 Covered Decks Overlooking River
- * 20' x 40' (4 Car) Detached Garage
- * New Metal Roof in 2008
- * New Water Heater in 2008
- * New Gas Wall Heater (for emergency heat) in 2009
- * Eat-N-Kitchen w/Custom Cabinets & Walk-In Pantry
- * Open Great Room Adjacent to Kitchen
- * Ceramic in Laundry & Baths
- * Laminate Floor in Kitchen
- * Carpet Throughout Balance of House

*Thank You
For Your Interest
-Lee Godfrey
731-343-2900*

Page 2 of 3



LEE GODFREY, BROKER, CRS

OFFICE: 731-664-2308

CELL: 731-343-2900

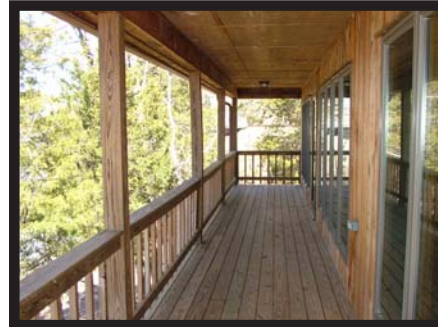
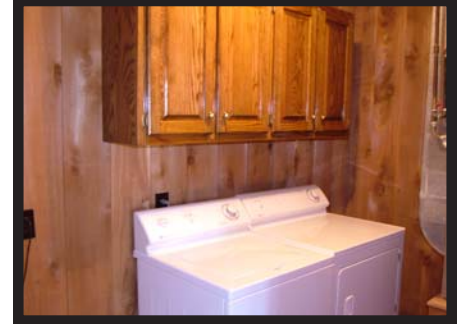
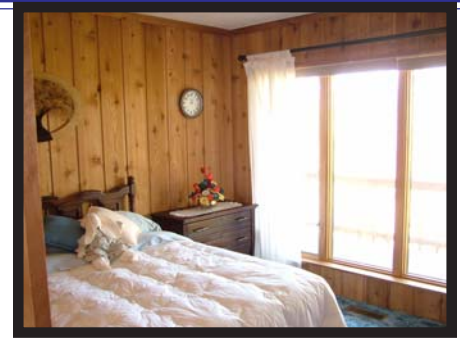
WEB SITE: www.LeeGodfrey.com

EMAIL: lee@leegodfrey.com



Real Estate Now

Property Profile



Top Quality Professional Service You Deserve!

Page 3 of 3