



LEE GODFREY, BROKER, CRS

OFFICE: 731-664-2308
CELL: 731-343-2900
WEB SITE: www.LeeGodfrey.com
EMAIL: lee@leegodfrey.com



Real Estate Now

Property Profile



782 WHITES CREEK - \$169,500
Whites Creek Subdivision

"One Level River Front Cabin"

2 Bedrooms - 1 Full Bath
1080 Sq Ft. Living Area
Covered Porch + Screened Porch

Top Quality Professional Service You Deserve!

ROOM ARRANGEMENT

Main Level

Kitchen/Dining Room Combination, Great Room, 2 Bedrooms - 1 Full Bath

GENERAL INFORMATION

Floor coverings: Carpet/Vinyl
Type Roof: Composition
Heat & Air: 1 Central Unit
Water Heaters: 1 Electric
Water Supply: Perryville Utilities
Sewage Disposal: Septic
Age: 4 Yrs (Built 2007)
Annual Taxes: \$710

ROOM SIZES

Great Room	17 x 17
Eat-N-Kitchen	17 x 12
Master Bed Rm	14 x 12
Bedroom #2	12 x 9
Laundry Room	6 x 8
Screened Porch	10 x 13

APPLIANCES INCLUDED

Range/Oven
Venthood
Refrigerator
Washer
Dryer

ITEMS INCLUDED

Personal Property



LEE GODFREY, BROKER, CRS

OFFICE: 731-664-2308
CELL: 731-343-2900
WEB SITE: www.LeeGodfrey.com
EMAIL: lee@leegodfrey.com



Real Estate Now

Property Profile

FEATURES & AMENITIES

- * Tennessee Riverfront Cabin
- * Fabulous Tennessee River Views
- * All on one Level
- * Open Vaulted Great Room/Kitchen/Dining Area Combination
- * 24' x 8' Deck
- * 30' x 8' Screened Porch
- * Double Carport & Storage Under the Living Quarters
- * Boat Ramp 150 Ft. From House

Directions to Property

From Courthouse in Decaturville, Tennessee. Take Highway 100 E. Towards Perryville for 3.25 miles. Turn Right on Mt. Carmel Road for 7.55 miles. Turn Left on Whites Creek Lane for 3/4 mile, House on Right.

LOT SIZE

50' x 150'
Approximately
.18 Acres

*Thank You
For Your Interest
-Lee Godfrey
731-343-2900*



LEE GODFREY, BROKER, CRS

OFFICE: 731-664-2308

CELL: 731-343-2900

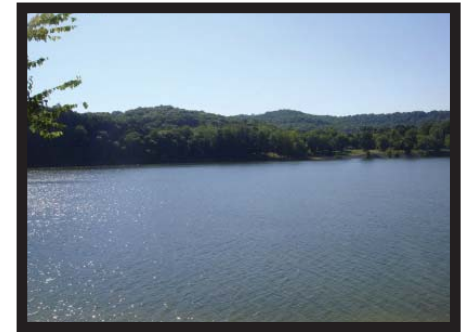
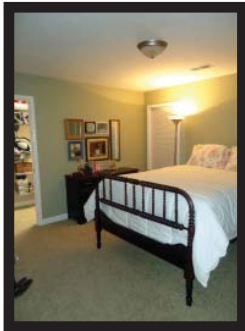
WEB SITE: www.LeeGodfrey.com

EMAIL: lee@leegodfrey.com



Real Estate Now

Property Profile



Top Quality Professional Service You Deserve!

Page 3 of 3