



**LEE GODFREY, BROKER, CRS**

OFFICE: 731-664-2308  
CELL: 731-343-2900  
WEB SITE: [www.LeeGodfrey.com](http://www.LeeGodfrey.com)  
EMAIL: [lee@leegodfrey.com](mailto:lee@leegodfrey.com)



Real Estate Now

*Property Profile*



**905 ATTAWAY LANE - \$325,000  
Subdivision**

**"Totally Private Waterfront Cabin"**

- 5 Acres with Gated Entrance
- 3 Bedrooms - 2 Full Baths in Main Cabin
- 2 Bedrooms - 1 Bath in Guest House
- Detached Garage + Storage Building

*Top Quality Professional Service You Deserve!*

**ROOM ARRANGEMENT**

Main Level

Great Room/Dining Room Combination, Master Bedroom Suite, 2 Guest Bedrooms & 2nd Full Bath, Kitchen, Seperate Laundry Room

**GENERAL INFORMATION**

Floor coverings: Hardwood/Vinyl  
Type Roof: Composition  
Heat & Air: 1 Central Unit  
Water Heaters: 1 Electric  
Water Supply: Public  
Sewage Disposal: Septic  
**Age: 30 Yrs (Built 1982)**  
**Annual Taxes: \$768**

**ROOM SIZES**

|               |         |
|---------------|---------|
| Great Room    | 36 x 18 |
| Eat-N-Kitchen | 14 x 7  |
| Master Bed Rm | 19 x 17 |
| Bedroom #2    | 17 x 17 |
| Bedroom #3    | 17 x 12 |
| Laundry Room  | 14 x 10 |

**APPLIANCES INCLUDED**

- Range
- Self Cleaning Oven
- Refrigerator
- Dishwasher

**ITEMS INCLUDED**

All Window Treatments



**LEE GODFREY, BROKER, CRS**

OFFICE: 731-664-2308  
CELL: 731-343-2900  
WEB SITE: [www.LeeGodfrey.com](http://www.LeeGodfrey.com)  
EMAIL: [lee@leegodfrey.com](mailto:lee@leegodfrey.com)



Real Estate Now

*Property Profile*

**FEATURES & AMENITIES**

- \* Private gated 5 acre lot
- \* One of the best views anywhere on the TN river in Decatur County
- \* No structures lie in the 100 year flood plane
- \* Authentic log home built by Judge Whit Lafon
- \* 1980 Sq. Ft. in main dwelling
- \* 3 large spacious bedrooms, split bedroom plan
- \* Wide plank hardwood floors
- \* Great room/dining room combination is all glass overlooking water
- \* Large covered deck overlooking river
- \* Guest house behind main cabin has 2 bedrooms - 1 full bath & full kitchen
- \* Concrete walk down to river's edge on west end of lot
- \* Steel staircase down to river on east end of lot
- \* Stone patio & fire pit on river's edge
- \* Detached garage + storage building

*Top Quality Professional Service You Deserve!*

**Directions to Property**

From intersection of Hwy 412 & Hwy 22 in Lexington, TN go south on Hwy 22 for 19.8 miles to Milledgeville, left on Hwy 69 for 9.1 miles to Saltillo, left on Hwy 69 in Saltillo for 5 miles, right on Attaway Lane for 7/10 mile to dead end of road

**LOT SIZE**

Approximately  
5+/- Acres  
Plat on File in Office

*Thank You  
For Your Interest  
-Lee Godfrey  
731-343-2900*

*Page 2 of 3*



**LEE GODFREY, BROKER, CRS**

OFFICE: 731-664-2308

CELL: 731-343-2900

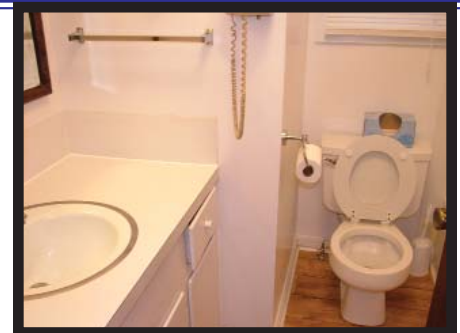
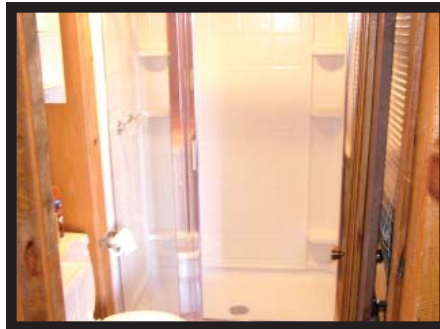
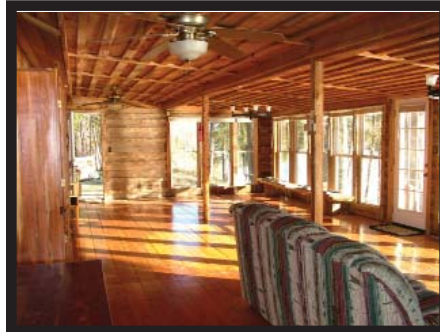
WEB SITE: [www.LeeGodfrey.com](http://www.LeeGodfrey.com)

EMAIL: [lee@leegodfrey.com](mailto:lee@leegodfrey.com)



Real Estate Now

## *Property Profile*



*Top Quality Professional Service You Deserve!*

*Page 3 of 3*



**LEE GODFREY, BROKER, CRS**

OFFICE: 731-664-2308

CELL: 731-343-2900

WEB SITE: [www.LeeGodfrey.com](http://www.LeeGodfrey.com)

EMAIL: [lee@leegodfrey.com](mailto:lee@leegodfrey.com)



Real Estate Now

## *Property Profile*

